



Total Solution Provider in Saw Device

SL1028V

Low-Loss 100MHz IF SAW Filter
28MHz Bandwidth
Revision 1: 29. Oct. 2007



- Electrical Characteristics
 - Package Dimensions
 - Testing Environment
 - Frequency Characteristics
-

SAWNICS Inc.

460 Cheonheung-ri, Seonggeo-eup, Cheonan-si, Chungcheongnam-do, 330-836 / Korea.
Tel: +82 41 550 9372 / Fax: +82 41 550 9399 / www.sawnics.com

□ Electrical Characteristics

Maximum Ratings

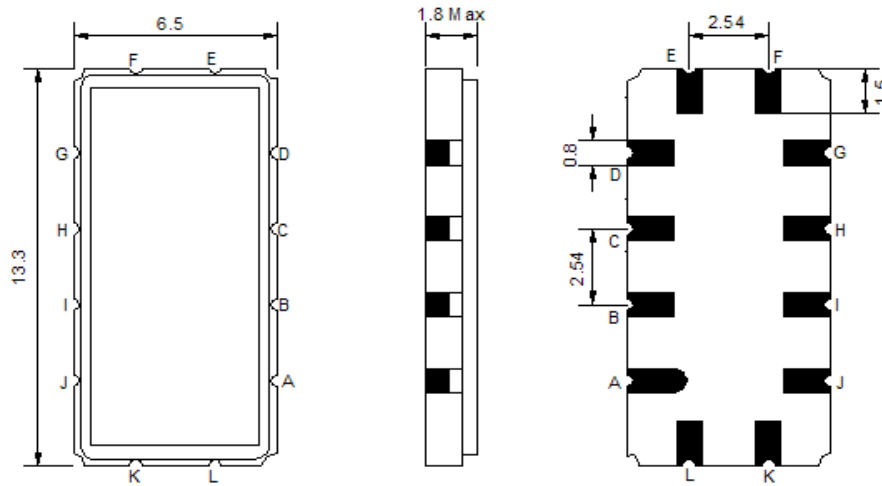
Parameters Description	Unit	Minimum	Typical	Maximum
Operating Temperature Range	°C	-30	-	80
Storage Temperature Range	°C	-40	-	85
Maximum DC Voltage	V	-	-	10
Maximum Input Power	dBm	-	-	10
Source Impedance (single ended) ⁽¹⁾	Ω	-	50	-
Load Impedance (single ended) ⁽¹⁾	Ω	-	50	-
Package type & size	V			
Length x Width	mm ²	-	13.3 x 6.5	-
Height	mm	-	-	1.8

Electrical Specification

Parameters Description	Unit	Minimum	Typical	Maximum
Center Frequency (Fo)	MHz	-	100.0	-
Insertion Loss at Fo	dB	-	17.5	19.5
Temperature Coefficient	ppm/°C	-	-86	-
Amplitude Ripple within fo ±13.0 MHz	dB _{p-p}	-	0.5	1.0
Group Delay Variation within fo ±13.0 MHz	nsec	-	50	80
Absolute Delay at Fo	µsec	-	0.88	0.92
Bandwidth at -1.0 dB	MHz	27.0	28.1	-
Bandwidth at -3.0 dB	MHz	28.0	29.0	-
Bandwidth at -40.0 dB	MHz	-	33.3	35
Relative Attenuation:				
Lower sidelobe	dB	40	47	-
Upper sidelobe	dB	40	47	-

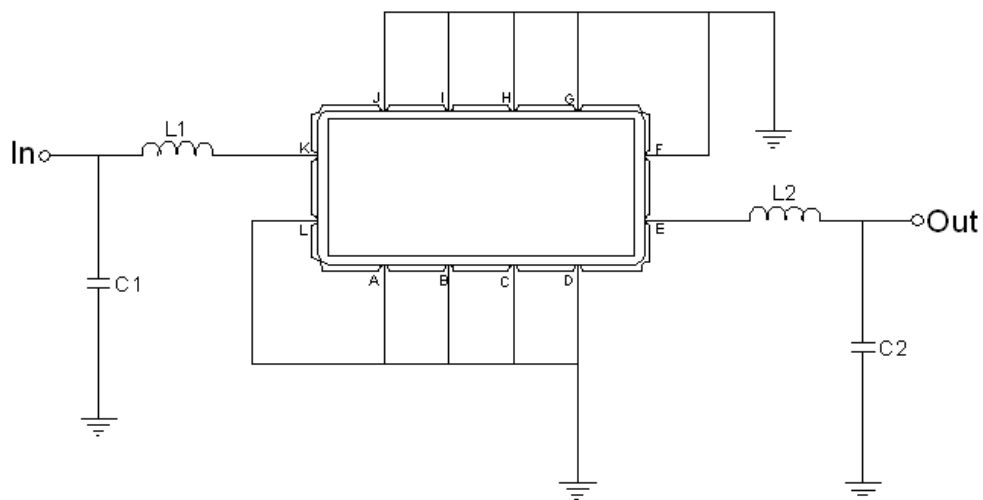
Notes : (1) With Matching Network (Ref. Testing Environment Circuit as shown below).
Those impedances could be modified with different impedance values and/or structures, if necessary.

□ Package Dimensions



Pin Description	
A, B, C, D, F, G, H, I, J, L	Ground
K	Input
E	Output

□ Testing Environment



Test Fixture & Values	
Input	L1=68nH Q>40
Output	L2=68nH Q>40, C2=15pF
Source/Load Impedance	50 Ω

□ Frequency Characteristics

Frequency Response

